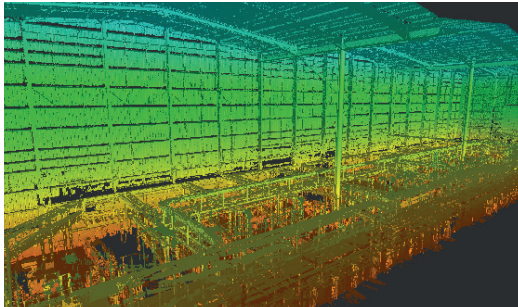
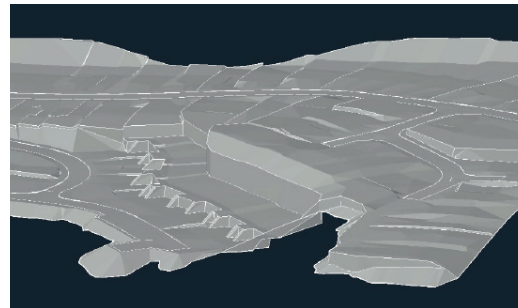
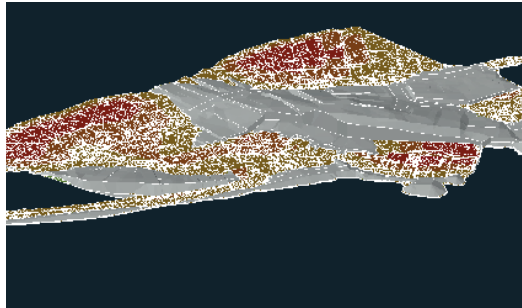


# ADEPT

CIVIL AND STRUCTURAL CONSULTING ENGINEERS



## RECRUITMENT BRIEF

**Senior Civil Technician**

**Birmingham**



Adept is a dynamic, strongly established civil and structural engineering consultancy with an excellent reputation for the delivery of complex and specialist projects.

Formed in 2007 by Erol Erturan, Matthew Ramsden and Richard Parker, Adept has grown to employ seventy engineers, technicians and support staff across bases in Leeds, London, Manchester, Sheffield, Birmingham and Hull. Since 2007, the business has delivered around 4,000 schemes with a total project value approaching £3.5 billion.

Our 'hands-on' Director-led approach ensures we carefully manage progress on every scheme. We invest in the best people who work collaboratively using the latest technology to deliver innovative, value-for-money civil and structural solutions on time and to budget.

The success of our approach is evident in our 80% repeat business rate, as clients trust us to consistently deliver reliable, high-quality results.

#### Our Sectors:

- Commercial
- Distribution
- Education
- Energy
- Extra Care
- Food Processing
- Healthcare
- Hotel & Leisure
- Listed buildings
- Residential
- Retail
- Warehousing
- Data centres

# The Opportunity

We are looking for a conscientious **Senior Civil Technician** with excellent commercial awareness. The role is suited to someone who is enthusiastic, knowledgeable about the technical detail of how infrastructure and other civil engineering projects are designed and constructed. You will work as part of a positive and passionate team to provide the very best service to our clients.

## THE PERSON

- You will be a key member of the team reporting to and working alongside the Project Engineer to ensure the delivery of outputs to meet the Clients brief. You will have the technical skills that will allow you to be confident in your position and will be able to work both under your own initiative and as part of a team to suit both the size and complexity of the Project
- An analytical and detailed approach to work
- Knowledge and understanding of the principles of Building Information Modelling (BIM) and a logical approach to problem solving with the initiative and determination to complete tasks
- A high level of technical awareness in relation to highways, drainage & earthworks modelling
- Excellent problem-solving skills

## QUALIFICATIONS, SKILLS AND EXPERIENCE

- 3+ years post qualification experience in a similar role
- A full UK driving licence would be beneficial but is not essential
- Developing engineers' sketches and design output towards full technical approval & construction drawing packages within the following categories
  - » S104 Drainage Packages
  - » S38 Highway Packages
  - » S278 Highway Packages
  - » Private Drainage Packages
  - » External Works / Levels Packages
  - » + Other section agreements on a variety of schemes types
- Strong communication skills with the ability to establish and maintain good working relationships with clients and colleagues
- Have a good working knowledge of
  - » Civils 3D (Desired but not necessary if there is a willingness to learn)
  - » Site 3d (Desired but not necessary if there is a willingness to learn)
  - » Microdrainage (Desired but not necessary)
- Carry out the modelling of vertical and horizontal road alignments and Foul and Surface water drainage systems to comply with Local Authority, Water Authority and LLFA requirements
- Be able to develop construction details, sections, etc
- Liaise with the Project Engineer and wider design team on issues requiring clarification or external input
- The ability to work on a wide portfolio of projects across all sectors simultaneously whilst managing your own workload and achieving key deliverable dates
- Engtech with the ICE (or willingness to work towards with full support)



# The Role

The role is office based with occasional visits to construction sites. The post is within the Adept civil engineering design team which is responsible for the design of highway and drainage schemes for commercial, industrial and residential developments.

The ideal candidate will be experienced in overall drainage and highway design and will have a minimum of three years experience in a similar role.

## OBJECTIVES AND KEY RESPONSIBILITIES

- Preparation of high quality drawings and details for varying civil engineering projects for residential, commercial and industrial developments
- Liaising with clients, contractors, architects and other members of the design team on a regular basis
- Organising and maintaining incoming and outgoing project documentation
- The completion of designs for External works and levels, S104 drainage agreements and S38/S278 Highways agreements among other Section agreements on a variety of schemes
- Attendance at site or other meetings with one of our Engineers or Directors to complete surveys, attend design team or site meetings may be required
- Producing drawing and model packages within defined project time scales
- Producing residential, commercial, industrial, road and drainage proposals for various developments
- The role will offer you the opportunity to progress through your professional career becoming a key member of the team



# Why consider this opportunity?

## BENEFITS

Our **Birmingham office** is located in Griffin House and is a short journey from Snow Hill Station.

This is an exciting opportunity to join a forward thinking company. In our Birmingham office, you will be working alongside a dedicated team.

We are offering a competitive salary which is dependent on experience. We are also offering a range of benefits inclusive of:

- 22 days annual leave rising to 25 with each year of service. (in addition to bank holidays),
- Paid professional membership fees
- Contributory pension scheme
- Income protection scheme
- Death in service payment
- Holiday purchase Scheme
- A discretionary profit and performance-related annual bonus
- Long service benefit
- £100 birthday bonus
- Monthly gym membership contribution
- Hybrid and flexible working
- Private Healthcare scheme
- Electric vehicle scheme
- Cycle to Work Scheme
- Employee social events
- Salary extras

Please see our [Benefits Brochure](#) for further information.

The successful candidate will be working with a highly motivated and committed team who successfully deliver an interesting and broad range of civil and structural engineering projects, within sectors such as healthcare, education and residential.

We genuinely believe in the benefits of providing a pleasant working environment where staff are respected, informed and given opportunities to better themselves.

Our Social Committee organise and run several social events every year.

# Digital Innovation

We understand that **Building Information Modelling (BIM)** is key to our industry's shared future. We see this as self evident and have modelled our business around this. We are a forward thinking, technologically advanced company and use the latest tools to deliver our projects, resulting in increasing productivity, efficiency and better service to our customers.

Despite our extensive experience, we are always looking for new and innovative ways to improve and develop. Exploring new software and processes are part of our working day. Our staff are continually encouraged and inspired to implement cutting edge solutions.

Our focus and expertise in BIM is rather unique. Having achieved BIM Level 2 accreditation in 2015 we became the **first civil and structural engineering consultancy in the UK to receive such an award**. This validated our advanced capability in modelling, analysis exchange and process maturity beyond compliance with UK standards, and we haven't stopped progressing.

We embrace trust based collaboration and recognise that working together creates benefits far greater than the sum of its parts. Clients, staff and design partners have gravitated towards this approach and the positives have been numerous.

Reduced rework, clash detection on site, intelligent data exchange, improved accuracy and greater transparency are just some of the quantifiable benefits we continue to share.

For project delivery we use a wide array of technical software, bespoke solutions and modules.

At the end of our projects all parties are more knowledgeable, experienced and better

equipped for the future and we see this as a great achievement. We openly share knowledge, models, processes and ideas and actively encourage our clients and sub-contractors to do the same.

Our attitude to digital innovation has been our unique selling point since our early days. BIM is integral and fundamental to the delivery of all our projects. There are no exceptions, it just makes eminent sense.

In practice we go beyond what is traditionally seen as BIM for Civil and Structural Engineers and routinely deploy our Laser Scanner, UAV and VR equipment.

All of our models are workshared for data segregation, most contain analysis data and other intelligent features beneficial to the digital twin envisaged for the lifecycle of the facility. Our current interests lie in mesh feature recognition from point clouds, LEAN processes and practical Virtual Reality.

We are also members of **Cyber Essentials Plus**, a government backed cyber certification scheme.



# The Adept Culture and Team

We know that a happy workforce leads to increased morale, productivity, and efficiency. Our culture is based on being staff focused and we genuinely believe in the benefits of providing a pleasant environment where staff are respected, supported and given opportunities to better themselves.

## CULTURE AND TEAM

We invest in tailor made training programmes (apprenticeship schemes, degrees, software and technical training and sales and management training) for our staff, to help them develop and progress in their career. Our staff have a wealth of experience, talent, skills and industry knowledge.

Our staff have taken part in a number of charitable events over the years, to raise money for different charities including Action Medical Research and Barnados:

- Yorkshire 3 Peaks
- York Cycling 100km Route
- Windermere 20 Challenge

A number of staff also provide 'volunteering days' to Lineham Farm Children's Centre in Leeds (who aim to enhance the lives of local children by organising respite breaks and holidays) to help out with improvements to the facilities. All Adept staff are provided with two days paid volunteering leave per annum.

Adept promotes social responsibility, growing our own talent, and promoting engineering and construction to young people.

## APPRENTICESHIP SCHEME

Adept runs a successful Apprenticeship programme, employing students from Leeds College of Building and Barnsley College. Every year new apprentices are recruited and developed, enabling them to learn and thrive.

We are proud of our ability to support the engineers of tomorrow and have employed at least one apprentice every year since 2008.

Nine members of our team have come through this route, and we continue to support Higher Apprenticeships to degree level. Our very first apprentice is now a senior engineer, having graduated from a university degree funded by Adept, and is now running his own complex scheme. A number of other Adept apprentices are currently studying at university.

## ICE TRAINING SCHEME

The Institution of Civil Engineers (ICE) Training Scheme is one of the best and quickest routes towards becoming a professionally qualified Civil Engineer. We are recognised as an ICE Approved Employer and able to operate within the scheme.

Trainees on the scheme are students and graduates that want to progress towards Chartered (CEng) or Incorporated Engineer (IEng) status.





# Build your future and become a part of our success

## INTERESTED?

To apply, please send your CV and covering letter to [jobs@adeptcsce.com](mailto:jobs@adeptcsce.com) or call **0121 820 8809** if you would like to enquire about the role.

Adept is an Equal Opportunities Employer



**ADEPT**  
CIVIL AND STRUCTURAL CONSULTING ENGINEERS

ENQUIRIES:  
0113 239 4518

# ADEPT

CIVIL AND STRUCTURAL CONSULTING ENGINEERS

## LEEDS

1912 Mill, Sunny Bank Mills  
Town Street  
Farsley, Leeds  
LS28 5UJ

## LONDON

140 Goswell Road  
London  
EC1V 7DY

## MANCHESTER

4th Floor  
7 St James Square  
Manchester  
M2 6XX

## BIRMINGHAM

Griffin House  
18-19 Ludgate Hill  
Birmingham  
B3 1DW

## HULL

C4DI, @TheDock  
31-38 Queen Street  
Hull  
HU1 1UU

## SHEFFIELD

3rd Floor  
1 East Parade  
Sheffield  
S1 2ET



**ENGINEERING  
BETTER  
TOGETHER**



**ENGINEERING  
ETHICS**  
BETTER TOGETHER

[www.adeptcsce.com](http://www.adeptcsce.com)