

# ADEPT

CIVIL AND STRUCTURAL CONSULTING ENGINEERS



## RECRUITMENT BRIEF

Senior Structural Engineer

Sheffield



This is an exciting opportunity to join a dynamic, rapidly growing and strongly established civil and structural engineering consultancy with an excellent reputation for the delivery of complex and specialist projects.

Adept was founded in January 2007 by business partners Erol Erturan, Richard Parker and Matthew Ramsden. Neil Brown joined in 2019, followed by Paul Gill and Gareth Shepherd in 2021 as Directors in the company and most recently Neil Barrett in 2022 as Regional Director of the London office.

We have a 'hands-on' Director led approach to carefully manage progress on every job and collaboratively develop solutions with the team which maximises value.

We are customer focused and know how to listen well and collaborate with clients, stakeholders and third parties, which is why 80% of our work is generated from repeat business.

Highly responsive, we employ the best staff who work collaboratively to Engineer Better Together using the latest technology to deliver innovative best value civil and structural solutions on time.

Our expert teams focus on delivering high quality customer services and high value returns from our offices in Leeds, Sheffield, Manchester and London.

Our Sectors:

- Commercial
- Distribution
- Education
- Energy
- Extra Care
- Food Processing
- Healthcare
- Hotel & Leisure
- Listed buildings
- Residential
- Retail
- Warehousing



# The Opportunity

Dynamic and optimistic in their approach, we are looking for an ambitious and well rounded Structural Engineer who can identify innovative and cost effective strategies and design solutions.

## THE PERSON

- In depth building construction knowledge
- Motivated, collaborative, passionate
- Reliable and enthusiastic
- An analytical and detailed approach to work
- A confident team player with superb interpersonal skills
- A creative innovator with a technical approach to projects and tasks
- Unquestionable integrity, experience, confidence, and the stature to effectively address major client needs and challenges
- Detailed knowledge and understanding of the principles of Building Information Modelling (BIM)
- A hands-on approach to projects
- A natural troubleshooter who can find simple, efficient solutions to identified challenges or complications
- A keen interest in the design and structure of buildings

## SKILLS AND EXPERIENCE

- 5+ years experience in the industry with Chartership or nearing chartered status
- Good problem-solving skills
- Sound understanding of physics and mathematics
- Three-dimensional conceptual skills
- Extremely strong communication, presentation and negotiation skills
- Diagrammatic skills
- The ability to work effectively and efficiently within a team
- Impeccable attention to detail
- The ability to liaise well with professionals from other disciplines
- Excellent knowledge of relevant software
- The ability to work on multiple projects simultaneously

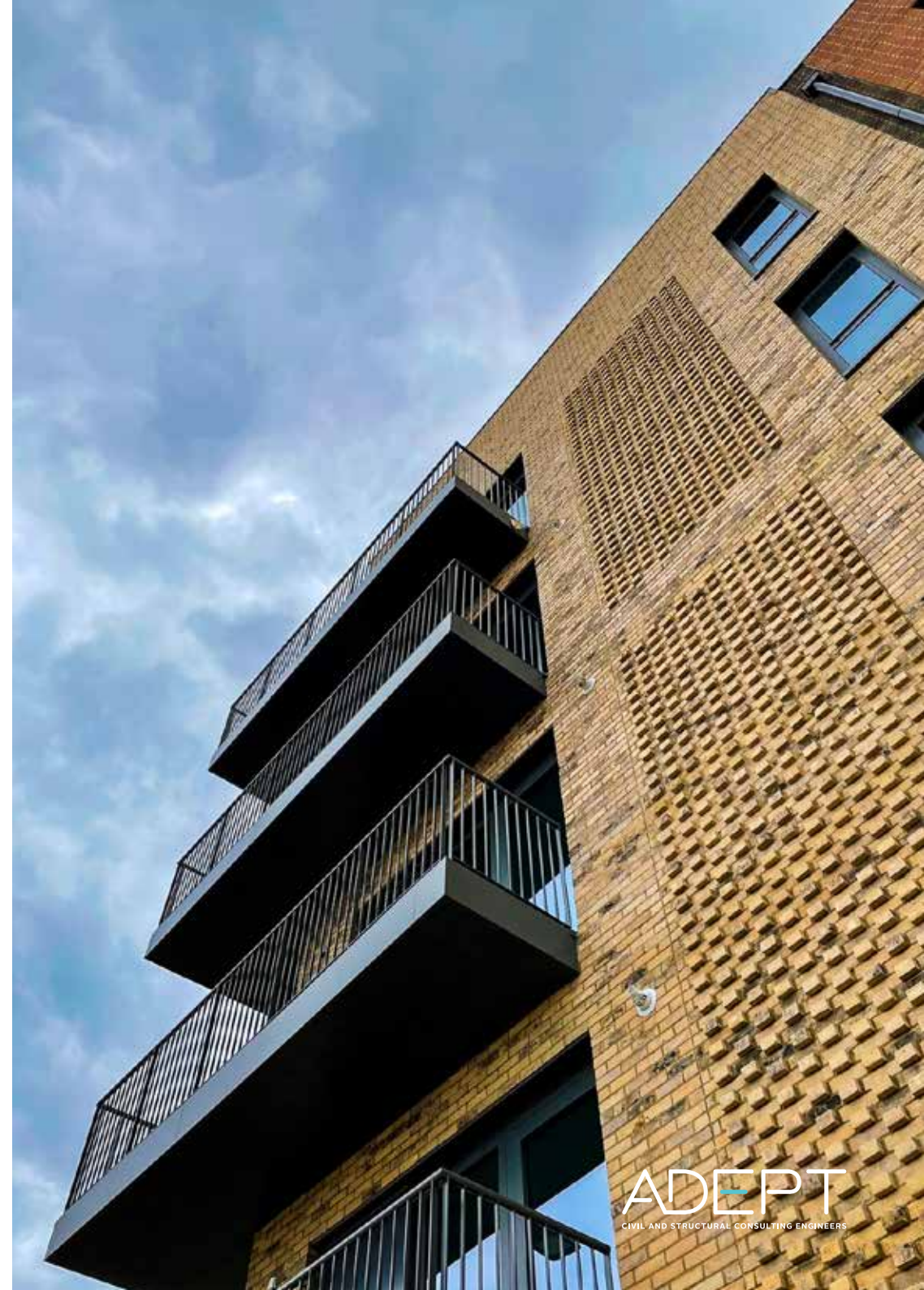


# The Role

The work is office-based with occasional visits to construction sites. The role itself is both technical and creative.

## OBJECTIVES AND KEY RESPONSIBILITIES

- The preparation of reports, specifications, designs and drawings, briefing documents, feasibility studies and options appraisals
- Assisting with or leading a variety of projects to completion; undertaking integrated 3D modelling and structural design
- Structural analysis with a particular focus on calculations in relation to loads and stresses
- Obtaining planning and/or building regulations approval
- Assessment, monitoring and integration work undertaken by specialists
- Administering contracts
- Managing projects from inception through to completion
- The consideration of the strength of various materials, e.g. timber, concrete, steel and brick, to evaluate how their inclusion may necessitate a change in structural design
- Liaison with other designers, including architects, to agree on safe designs and their fit with the aesthetic concept of the construction
- On-site inspection and testing
- Proficient in the use of structural software such as Robot, Tekla Structural designer & Masterseries
- The examination of structures at risk of collapse and advise how to improve their structural integrity, such as recommending removal or repair of defective parts or rebuilding the entire structure
- Work collaboratively with geotechnical engineers to investigate ground conditions and analyse results of soil sample and in situ tests
- Liaison with construction contractors to ensure that newly erected buildings are structurally sound
- Apply expert knowledge of the forces and their subsequent effect on various structures
- Site appraisals and surveys
- Appraising geotechnical and geological investigations
- Material investigations
- Ground improvement studies
- The structural design and detailing of foundations, retaining walls, buildings, for example
- Assessment of special loads
- Building regulations submissions
- Defect assessment and the development of remediation solutions





# Why consider this opportunity?

## BENEFITS

**Salary:** Competitive dependent on experience.

**Hours of Work:** 37.5 hours a week with some flexibility for the correct applicant.

**Office location:** Our Sheffield office is a high quality office space in the heart of the city centre.

**Benefits:** This is an exciting opportunity to join a forward thinking company. We are also offering a range of benefits inclusive of:

- Contributory pension
- Healthcare scheme
- Electric vehicle scheme
- Cycle to Work Scheme
- Monthly gym membership contribution
- Paid professional memberships fees
- 22 days annual leave (in addition to bank holidays),
- Employee social events
- A discretionary profit and performance-related annual bonus
- £100 birthday bonus

The successful candidate will be working with a highly motivated and committed team who successfully deliver an interesting and broad range of civil and structural engineering projects, within sectors such as healthcare, education and residential.

Our office is a friendly and supportive working environment. We genuinely believe in the benefits of providing a pleasant working environment where staff are respected, informed and given opportunities to better themselves.

We have a Social Committee who organise and run regular staff social events every year.

# Digital Innovation

We understand that Building Information Modelling (BIM) is key to our industry's shared future. We see this as self evident and have modelled our business around this.

We are a forward thinking, technologically advanced company and use the latest tools to deliver our projects, resulting in increasing productivity, efficiency and better service to our customers. Despite our extensive experience, we are always looking for new and innovative ways to improve and develop. Exploring new software and processes are part of our working day. Our staff are continually encouraged and inspired to implement cutting edge solutions.

Our focus and expertise in BIM is rather unique. Having achieved BIM Level 2 accreditation in 2015 we became the first civil and structural engineering consultancy in the UK to receive such an award. This validated our advanced capability in modelling, analysis exchange and process maturity beyond compliance with UK standards, and we haven't stopped progressing.

We embrace trust based collaboration and recognise that working together creates benefits far greater than the sum of its parts. Clients, staff and design partners have gravitated towards this approach and the positives have been numerous.

Reduced rework, clash detection on site, intelligent data exchange, improved accuracy and greater transparency are just some of the quantifiable benefits we continue to share.

At the end of our projects all parties are more knowledgeable, experienced and better equipped for the future and we see this as a great achievement. We openly share knowledge, models, processes and ideas and actively encourage our clients and sub-contractors to do the same.

Adept's attitude to Digital Innovation has been our unique selling point since our early days. BIM is integral and fundamental to the delivery of all our projects. There are no exceptions, it just makes eminent sense.

In practice we go beyond what is traditionally seen as BIM for Civil/Structural Engineers and routinely deploy our Laser Scanner, UAV and VR equipment.

All of our models are workshared for data segregation, most contain analysis data and other intelligent features beneficial to the digital twin envisaged for the lifecycle of the facility. This is our modus operandi. Our current interests lie in mesh feature recognition from point clouds, LEAN processes and practical Virtual Reality.

We are members of Cyber Essentials Plus, a government backed cyber certification scheme.

For project delivery Adept uses a wide (and often changing) array of technical software, bespoke solutions and modules.





# Build your future and become a part of our success

## APPLICATION PROCESS

To apply, please send your CV and covering letter to [jobs@adeptsce.com](mailto:jobs@adeptsce.com) or call 0113 239 4518 if you would like to enquire about the role.

Adept is an Equal Opportunities Employer



**ADEPT**  
CIVIL AND STRUCTURAL CONSULTING ENGINEERS

ENQUIRIES:  
0113 239 4518

# ADEPT

CIVIL AND STRUCTURAL CONSULTING ENGINEERS

LEEDS  
1912 Mill,  
Sunny Bank Mills  
Town Street  
Farsley, Leeds  
LS28 5UJ

SHEFFIELD  
1 East Parade  
Sheffield City Centre  
Sheffield  
S1 2ET

MANCHESTER  
St James Square  
4th Floor  
Manchester  
M2 6DN

LONDON  
140 Goswell Road  
London  
EC1V 7DY



ENGINEERING  
BETTER  
TOGETHER



ENGINEERING  
ETHICS  
BETTER TOGETHER

[www.adeptcsce.com](http://www.adeptcsce.com)