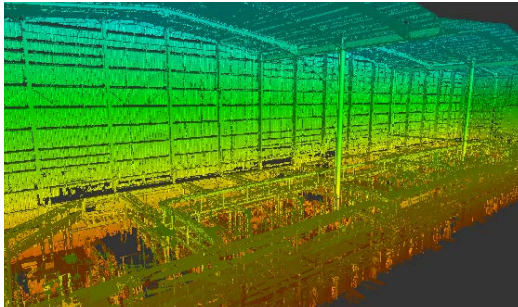
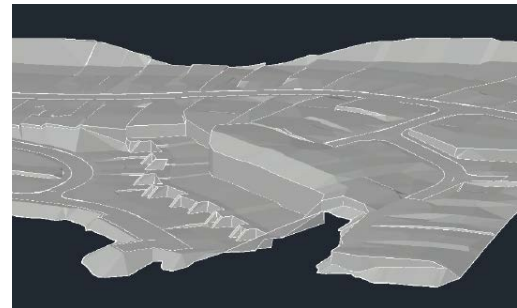
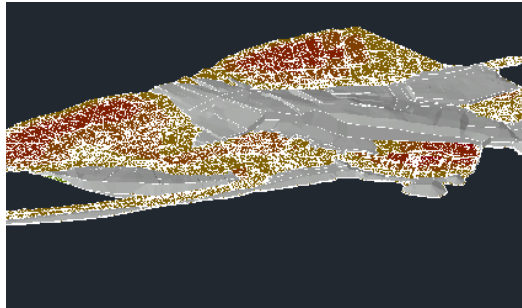


ADEPT

CIVIL AND STRUCTURAL CONSULTING ENGINEERS



RECRUITMENT BRIEF STRUCTURAL REVIT TECHNICIAN



This is an exciting opportunity to join a dynamic, rapidly growing and strongly established civil and structural engineering consultancy with an excellent reputation for the delivery of complex and specialist projects.

Adept was founded in January 2007 by business partners Erol Erturan, Richard Parker and Matthew Ramsden. Neil Brown joined in 2019, followed by Paul Gill and Gareth Shepherd in 2021 as Directors in the company and most recently Neil Barrett in 2022 as Regional Director of the London office.

We have a 'hands-on' Director led approach to carefully manage progress on every job and collaboratively develop solutions with the team which **maximises value**.

We are customer focused and know how to **listen** well and collaborate with clients, stakeholders and third parties, which is why **80% of our work is generated from repeat business**.

Highly responsive, we employ the best staff who work collaboratively to Engineer Better Together using the latest technology to deliver innovative best value civil and structural solutions on time.

Our expert teams focus on delivering high quality customer services and high value returns from our offices in Leeds, Sheffield, Manchester and London.

Our Sectors:

- **Commercial**
- **Distribution**
- **Education**
- **Energy**
- **Extra Care**
- **Food Processing**
- **Healthcare**
- **Hotel & Leisure**
- **Listed buildings**
- **Residential**
- **Retail**
- **Warehousing**



The Opportunity

Dynamic and optimistic in their approach, we are looking for an ambitious and well rounded **Structural Revit Technician** to work in our Leeds office.

OBJECTIVES AND KEY RESPONSIBILITIES

- Maintaining the company Revit/BIM standards and templates
- Revit project reviewing
- Production of structural engineering 2D and 3D drawings at all stages, including concept, tender and construction
- Production of high quality Revit models, ensuring that the drawings co-ordinate with other disciplines
- Preparation of building structures drawings with accuracy and integrity
- Working collaboratively within the team to adhere to BIM standards
- Preparation of project documentation
- Generating clash reports
- Delivery and management of multiple BIM projects
- Setting up and defining project models
- Overseeing model authoring by others to SMPs and standards



The Role

The work is office-based, with occasional visits to construction sites. You will work as part of a positive and passionate team to provide the very best service to our clients.

THE PERSON

- An analytical and detailed approach to work
- Reliable and enthusiastic
- Motivated, collaborative, passionate
- A confident team player with superb interpersonal skills
- A creative innovator with a technical approach to projects and tasks
- Unquestionable integrity, experience, confidence, and the stature to effectively address major client needs and challenges
- A hands-on approach to projects
- A natural troubleshooter who can find simple, efficient solutions to identified challenges or complications
- A keen interest in the design and structure of buildings
- Impeccable attention to detail

QUALIFICATIONS, SKILLS AND EXPERIENCE

- Three+ years experience in the industry
- Advanced experience in Revit and collaboration between Revit and Navisworks
- Proven competency in producing 3D models from Point Cloud data including the creation of parametric families within Autodesk Revit
- Proficient in AutoCAD
- Detailed knowledge and understanding of the principles of Building Information Modelling (BIM)
- Sound understanding of physics and mathematics
- Good problem-solving skills
- Three-dimensional conceptual skills
- Extremely strong communication, presentation and negotiation skills
- Diagrammatic skills
- The ability to work effectively and efficiently within a team
- The ability to liaise well with professionals from other disciplines
- The ability to work on multiple projects simultaneously





Why consider this opportunity?

BENEFITS

Our **Leeds office** is a high quality office space in a restored mill situated on the historical Farsley Town Street.

This is an exciting opportunity to join a forward thinking company. In our Leeds office, you will be working alongside a dedicated team.

We are offering a competitive salary which is dependent on experience.

We also offer a range of benefits inclusive of:

- Contributory pension
- Healthcare scheme
- Electric vehicle scheme
- Free office parking
- Cycle to Work Scheme
- Monthly gym membership contribution
- Paid professional memberships fees
- 22 days annual leave (in addition to bank holidays),
- Employee social events
- Discretionary profit and performance-related annual bonus
- Tailored Training Opportunities
- £100 birthday bonus

The successful candidate will be working with a highly motivated and committed team who successfully deliver an interesting and broad range of civil and structural engineering projects, within a range of sectors.

We genuinely believe in the benefits of providing a pleasant working environment where staff are respected, informed and given opportunities to better themselves.

Digital Innovation

We understand that Building Information Modelling (BIM) is key to our industry's shared future. We see this as self evident and have modelled our business around this.

We are a forward thinking, technologically advanced company and use the latest tools to deliver our projects, resulting in increasing productivity, efficiency and better service to our customers. Despite our extensive experience, we are always looking for new and innovative ways to improve and develop. Exploring new software and processes are part of our working day. Our staff are continually encouraged and inspired to implement cutting edge solutions.

Our focus and expertise in BIM is rather unique. Having achieved BIM Level 2 accreditation in 2015 we became the first civil and structural engineering consultancy in the UK to receive such an award. This validated our advanced capability in modelling, analysis exchange and process maturity beyond compliance with UK standards, and we haven't stopped progressing.

We embrace trust based collaboration and recognise that working together creates benefits far greater than the sum of its parts. Clients, staff and design partners have gravitated towards this approach and the positives have been numerous.

Reduced rework, clash detection on site, intelligent data exchange, improved accuracy and greater transparency are just some of the quantifiable benefits we continue to share.

At the end of our projects all parties are more knowledgeable, experienced and better equipped for the future and we see this as a great achievement. We openly share knowledge, models, processes and ideas and actively encourage our clients and sub-contractors to do the same.

Adept's attitude to Digital Innovation has been our unique selling point since our early days. BIM is integral and fundamental to the delivery of all our projects. There are no exceptions, it just makes eminent sense.

In practice we go beyond what is traditionally seen as BIM for Civil/Structural Engineers and routinely deploy our Laser Scanner, UAV and VR equipment.

All of our models are workshared for data segregation, most contain analysis data and other intelligent features beneficial to the digital twin envisaged for the lifecycle of the facility. This is our modus operandi. Our current interests lie in mesh feature recognition from point clouds, LEAN processes and practical Virtual Reality.

We are members of Cyber Essentials Plus, a government backed cyber certification scheme.

For project delivery Adept uses a wide (and often changing) array of technical software, bespoke solutions and modules.



The Adept Culture and Team

We know that a happy workforce leads to increased morale, productivity, and efficiency. Our culture is based on being staff focused and we genuinely believe in the benefits of providing a pleasant environment where staff are respected, supported and given opportunities to better themselves.

CULTURE AND TEAM

We invest in tailor made training programmes (apprenticeship schemes, degrees, software and technical training and sales and management training) for our staff, to help them develop and progress in their career. Our staff have a wealth of experience, talent, skills and industry knowledge.

Our staff have taken part in a number of charitable events over the years, to raise money for different charities including Action Medical Research and Barnados:

- Yorkshire 3 Peaks
- York Cycling 100km Route
- Windermere 20 Challenge

A number of staff also provide 'volunteering days' to Lineham Farm Children's Centre in Leeds (who aim to enhance the lives of local children by organising respite breaks and holidays) to help out with improvements to the facilities. All Adept staff are provided with two days paid volunteering leave per annum.

Adept promotes social responsibility, growing our own talent, and promoting engineering and construction to young people.

APPRENTICESHIP SCHEME

Adept runs a successful Apprenticeship programme, employing students from Leeds College of Building and Barnsley College. Every year new apprentices are recruited and developed, enabling them to learn and thrive.

We are proud of our ability to support the engineers of tomorrow and have employed at least one apprentice every year since 2008.

Nine members of our team have come through this route, and we continue to support Higher Apprenticeships to degree level. Our very first apprentice is now a senior engineer, having graduated from a university degree funded by Adept, and is now running his own complex scheme. A number of other Adept apprentices are currently studying at university.

ICE TRAINING SCHEME

The Institution of Civil Engineers (ICE) Training Scheme is one of the best and quickest routes towards becoming a professionally qualified Civil Engineer. We are recognised as an ICE Approved Employer and able to operate within the scheme.

Trainees on the scheme are students and graduates that want to progress towards Chartered (CEng) or Incorporated Engineer (IEng) status.





Build your future and become a part of our success

INTERESTED?

To apply, please send your CV and covering letter to jobs@adeptcsce.com or call **0113 239 4518** if you would like to enquire about the role.

Adept is an Equal Opportunities Employer



ENQUIRIES:
0113 239 4518

ADEPT

CIVIL AND STRUCTURAL CONSULTING ENGINEERS

LEEDS

1912 Mill,
Sunny Bank Mills
Town Street
Farsley, Leeds
LS28 5UJ

SHEFFIELD

Courtwood House
Silver Street Head
Sheffield
S1 2DD

MANCHESTER

St James Square
4th Floor
Manchester
M2 6DN

LONDON

25 Horsell Road,
London,
N5 1XL



ENGINEERING
BETTER
TOGETHER



ENGINEERING
ETHICS
BETTER TOGETHER

www.adeptcsce.com