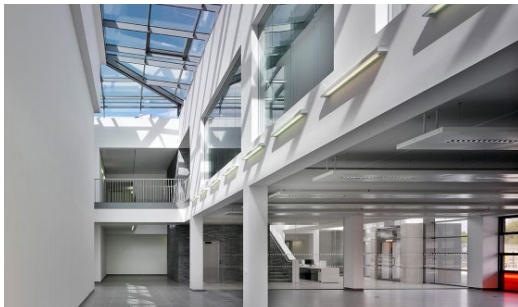


# ADEPT

CIVIL AND STRUCTURAL CONSULTING ENGINEERS



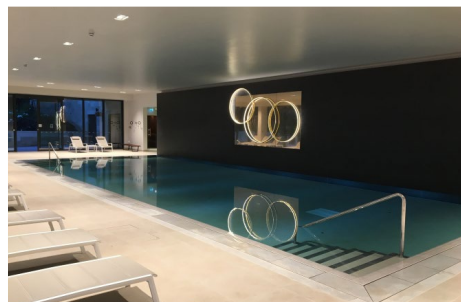
## RECRUITMENT BRIEF GRADUATE ENGINEER - STRUCTURAL LEEDS

[www.adeptcsce.com](http://www.adeptcsce.com)





# Introduction to Adept



This is an exciting opportunity to join a dynamic, rapidly growing and strongly established civil and structural engineering consultancy with an excellent reputation for the delivery of complex and specialist projects.

Adept Consulting Engineers Ltd was founded in January 2007 by business partners Erol Erturan, Richard Parker and Matthew Ramsden, who work to engineer better together using BIM.

Our clients choose us because of our reputation as a customer focused personal and responsive company that employs the best staff who use the latest technology to deliver the best value service on time.

We have a loyal client base and almost 80% of our work is generated from repeat business.

We work within a wide range of sectors, including:

- Commercial
- Distribution
- Education
- Energy
- Extra Care
- Food Processing
- Health
- Hotel & Leisure
- Listed buildings
- Residential
- Retail
- Warehousing



# The Opportunity

We are looking for a dynamic, optimistic and ambitious **Graduate Structural Engineer** with excellent commercial awareness. You will work as part of a positive and passionate team to provide the very best service to our clients.

## THE PERSON

- Outstanding passion for structural engineering, infrastructure and design
- Reliable and enthusiastic
- An analytical and detailed approach to work
- A confident team player with superb interpersonal and communication skills
- Unquestionable integrity and confidence
- Have a good knowledge of BIM and structural analysis fundamentals
- Excellent team player
- A logical analytical approach to problem solving and the initiative and determination to complete tasks
- Willingness to learn

## QUALIFICATIONS, SKILLS AND EXPERIENCE

- Bachelor's Degree in Structural Engineering (or equivalent)
- Membership of a relevant Professional Institution with aspirations to obtain Chartership status
- Excellent technical and numerical skills
- Skilled communicator, capable of producing reports
- Knowledge of relevant software such as Robot, Tekla Structures, Masterseries.
- The ability to work on multiple projects simultaneously
- High degree of competence in project management





# The Role

The role is office based with occasional visits to construction sites. The post is within the Adept structural engineering design team which is responsible for the design of schemes for commercial, industrial and residential developments.

## OBJECTIVES AND KEY RESPONSIBILITIES

Training will be provided to enable the successful candidate to carry out the following tasks:

- Preparing structural designs for a variety of projects.
- Finding structural engineering solutions to meet client needs.
- Choosing structures and details that are economical and practical.
- Collaborate with the rest of the Structural team in the delivery of outputs to agreed deadlines.
- Liaise with the client and design teams on active projects and to manage and procure deliverables on time.
- Careful management of project time recording.
- Work effectively within a team and contribute ideas concisely.
- Liaise with clients confidently through effective communication and collaboration.
- Attend Design Team Meetings and site inspections.
- Run the day to day workings of a project with assistance from the Principal Engineer/Director of the team.
- Prepare and manage technical reports.
- Training to use software needed to design and deliver a project successfully.
- Prepare technical structural reports.







# Why consider this opportunity?

**Salary:** Competitive, dependent on experience

**Hours of Work:** Full time 37.5 hours a week

**Office location:** Our Leeds office is a high quality office space in a restored mill situated on the historical Farsley Town Street.

**Benefits:** This is an exciting opportunity to join a forward thinking company. We are also offering a range of benefits inclusive of:

- Contributory pension
- Healthcare scheme
- Electric vehicle scheme
- Cycle to Work Scheme
- Monthly gym membership contribution
- Paid professional memberships fees
- 22 days annual leave (in addition to bank holidays)
- Employee social events
- A discretionary profit and performance-related annual bonus
- £100 birthday bonus

The successful candidate will be working with a highly motivated and committed team who successfully deliver an interesting and broad range of civil and structural engineering projects, within sectors such as healthcare, education and residential.

Our office is a friendly and supportive working environment. We genuinely believe in the benefits of providing a pleasant working environment where staff are respected, informed and given opportunities to better themselves.

We have a Social Committee who organise and run regular staff social events every year.

# Digital Innovation

We understand that Building Information Modelling (BIM) is key to our industry's shared future. We see this as self evident and have modelled our business around this.

We are a forward thinking, technologically advanced company and use the latest tools to deliver our projects, resulting in increasing productivity, efficiency and better service to our customers. Despite our extensive experience, we are always looking for new and innovative ways to improve and develop. Exploring new software and processes are part of our working day. Our staff are continually encouraged and inspired to implement cutting edge solutions.

Our focus and expertise in BIM is rather unique. Having achieved BIM Level 2 accreditation in 2015 we became the first civil and structural engineering consultancy in the UK to receive such an award. This validated our advanced capability in modelling, analysis exchange and process maturity beyond compliance with UK standards, and we haven't stopped progressing.

We embrace trust based collaboration and recognise that working together creates benefits far greater than the sum of its parts. Clients, staff and design partners have gravitated towards this approach and the positives have been numerous.

Reduced rework, clash detection on site, intelligent data exchange, improved accuracy and greater transparency are just some of the quantifiable benefits we continue to share.

At the end of our projects all parties are more knowledgeable, experienced and better equipped for the future and we see this as a great achievement. We openly share knowledge, models, processes and ideas and actively encourage our clients and sub-contractors to do the same.

Adept's attitude to Digital Innovation has been our unique selling point since our early days. BIM is integral and fundamental to the delivery of all our projects. There are no exceptions, it just makes eminent sense.

In practice we go beyond what is traditionally seen as BIM for Civil/Structural Engineers and routinely deploy our Laser Scanner, UAV and VR equipment.

All of our models are workshared for data segregation, most contain analysis data and other intelligent features beneficial to the digital twin envisaged for the lifecycle of the facility. This is our modus operandi. Our current interests lie in mesh feature recognition from point clouds, LEAN processes and practical Virtual Reality.

We are members of Cyber Essentials Plus, a government backed cyber certification scheme.

For project delivery Adept uses a wide (and often changing) array of technical software, bespoke solutions and modules.





# The Adept Culture and Team

We know that a happy workforce leads to increased morale, productivity, and efficiency. Our culture is based on being staff focused and we genuinely believe in the benefits of providing a pleasant environment where staff are respected, supported and given opportunities to better themselves.

## CULTURE AND TEAM

We invest in tailor made training programmes (apprenticeship schemes, degrees, software and technical training and sales and management training) for our staff, to help them develop and progress in their career. Our staff have a wealth of experience, talent, skills and industry knowledge.

Our staff have taken part in a number of charitable events over the years, to raise money for different charities including Action Medical Research and Barnados:

- Yorkshire 3 Peaks
- York Cycling 100km Route
- Windermere 20 Challenge

A number of staff also provide 'volunteering days' to Lineham Farm Children's Centre in Leeds (who aim to enhance the lives of local children by organising respite breaks and holidays) to help out with improvements to the facilities. All Adept staff are provided with two days paid volunteering leave per annum.

Adept promotes social responsibility, growing our own talent, and promoting engineering and construction to young people.

## APPRENTICESHIP SCHEME

Adept runs a successful Apprenticeship programme, employing students from Leeds College of Building and Barnsley College. Every year new apprentices are recruited and developed, enabling them to learn and thrive.

We are proud of our ability to support the engineers of tomorrow and have employed at least one apprentice every year since 2008.

Nine members of our team have come through this route, and we continue to support Higher Apprenticeships to degree level. Our very first apprentice is now a senior engineer, having graduated from a university degree funded by Adept, and is now running his own complex scheme. A number of other Adept apprentices are currently studying at university.

## ICE TRAINING SCHEME

The Institution of Civil Engineers (ICE) Training Scheme is one of the best and quickest routes towards becoming a professionally qualified Civil Engineer. We are recognised as an ICE Approved Employer and able to operate within the scheme.

Trainees on the scheme are students and graduates that want to progress towards Chartered (CEng) or Incorporated Engineer (IEng) status.





# Build your future and become a part of our success

INTERESTED?

To apply, please send your CV and covering letter to [jobs@adeptcsce.com](mailto:jobs@adeptcsce.com) or call **0113 239 4518** if you would like to enquire about the role.

**Adept is an Equal Opportunities Employer**



**ADEPT**  
CIVIL AND STRUCTURAL CONSULTING ENGINEERS